

MANDATORY
CHAMBERS COPY

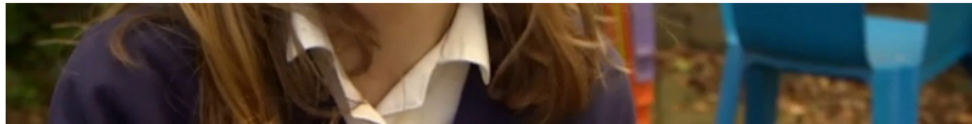
EXHIBIT B, VOL. 1



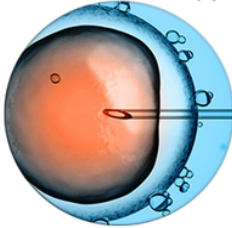
- [Home](#)
- [Stem Cell Therapy](#)
- [Immunotherapy](#)
- [IV Therapy](#)
- [PRP Therapy](#)
- [Others](#)
- [More...](#)



Welcome to
Regenerative Medical Group
 where **Miracles Happen Every day**



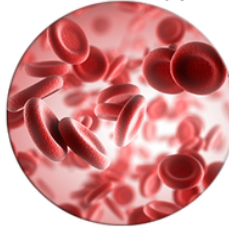
Stem Cell Therapy



IV Therapy



PRP Therapy



Dr. Henderson



About us



Contact us



Miracle Testimonies



Over 20,000 Fans



Regenerative Medical Group's

Cerebral palsy Stem cell therapy

[Know More](#)

[Click here to begin the survey](#)



Charcot Marie Tooth



COPD



Chronic Kidney Diseases



Dementia



Depression



Diabetes



Head Injuries



Heart Attack



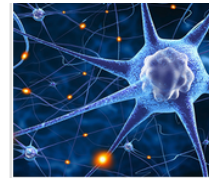
Liver Disease



Macular Degeneration



Parkinson's



Stroke



Loan Options
Multiple Lenders to Choose From!

CLICK HERE

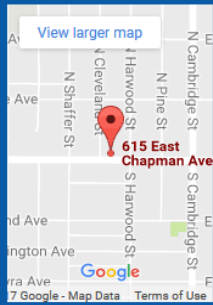
[\(949\) 346-2355](tel:(949)346-2355)

info@stemcell.life

Regenerative Medical Group

Orange- Old Town

615 E. Chapman Ave.
Orange, CA 92866



Orange- Hemisphere

5334 E. Chapman Ave.
Suite 100
Orange, CA 92869



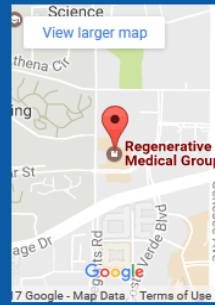
Upland

954 W. Foothill Blvd.
Suite B
Upland, CA 91786



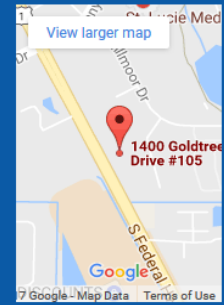
La Jolla

4150 Regents Park Row
Suite 235
La Jolla, CA 92037



Florida

1400 Goldtree Dr,
Suite 105
Port St Lucie, FL 34952



[Stem Cell Therapy](#) • [PRP Therapy](#) • [Dr. Henderson](#) • [About RMG](#) • [Contact us](#)

© 2017 Stemcell.life All Rights Reserved

- [HIPAA Release of Information Authorization Form](#)
- [Privacy Statement](#)
- [Terms and Conditions.](#)



Leave a message



<https://www.stemcell.life/>

11:00:50 AM 5/12/2017

The screenshot shows a web browser window with the URL <https://www.stemcell.life>. The page header includes the Regenerative Medical Group logo and navigation links: Home, Stem Cell Therapy, Immunotherapy, IV Therapy, PRP Therapy, Others, and More... A search bar is also present.

The main content area features a testimonial for "Cerebral Palsy Stem Cell therapy". The text reads: "Cerebral palsy patient [REDACTED] 11, shows huge improvement after the treatment [REDACTED] has been severely physically disabled since birth She could neither walk or talk and it seemed that was how it would always be In October she had stem cell treatment in California Since returning home she has shown huge improvement, even speaking her first words". A red "READ MORE" button is located below the text. To the right of the text is a photograph of a family (a boy, a woman, a girl, and a man) standing next to a doctor in a white coat.

Below the testimonial is a video player. The video thumbnail shows a young girl with a pink headband, and the BBC logo is visible in the top left corner of the video frame. A play button is centered over the video. At the bottom right of the video player, there is a "Leave a message" button and a small shield icon.

<https://www.stemcell.life/>

11:03:39 AM 5/12/2017

The screenshot shows a web browser window with the URL <https://www.stemcell.life>. The page features the Regenerative Medical Group logo and a navigation menu with items: Home, Stem Cell Therapy, Immunotherapy, IV Therapy, PRP Therapy, Others, and More... A large banner with a grey background and colorful puzzle pieces (yellow, green, blue) contains the text: "We can reverse Autism symptoms". Below this, it asks "Is my loved one a candidate?" and describes the challenges of Autism. A red "KNOW MORE" button is present. Below the banner is a video player showing a young girl with a BBC logo in the top left corner. A "Leave a message" button is at the bottom right of the video player.

<https://www.stemcell.life/>



- Home
- Stem Cell Therapy
- Immunotherapy
- IV Therapy
- PRP Therapy
- Others
- More...



“We give YOU HELP and HOPE where YOU and others have given up”



See If You Qualify
Patient enrollment is limited

Can Stem Cell Therapy really help patients with AMD?

Yes it can. Macular Degeneration is damage to the macula and a subsequent loss of central vision.

There are two types – wet and dry both of which benefit from stem cells. The wet is due to abnormal blood vessel growth.

The dry has yellow deposits (drusen) due to cholesterol. The stem cells make NEW macular blood vessels which either clean up the deposits (in dry) or increase circulation making normal blood vessels (in wet).

Stem Cell Treatments have been shown to improve sight in patients with macular degeneration.

These procedures help patients who don't respond to typical drug treatment. These patients often have better results if stem cell therapy is begun early.

There is light at the end of the tunnel

Cure for Macular Degeneration?

Eye with Degenerated Macula

Regenerative Medical Group offers patients access to Macular degeneration stem cell therapy using amniotic Stem Cells. These Macular Degeneration Stem Cell Treatments have been shown to improve sight in patients with Macular degeneration. These procedures help patients who don't respond to typical drug treatment. These patients often have better results if stem cell therapy is begun early in the illness.

Since we have hundreds of patient with successful results we have been able to identify patterns of where stem cells make NEW cells. This is one of our advantages in helping you!

Be a Miracle Today!

Our offices are in:

- Orange
- Upland
- La Jolla
- Florida



We give YOU HELP and HOPE where YOU and others have given up

Dr. Bryn J. Henderson

Schedule Appointment

Contact us @ (949)346-2355

Full Name *

Full Name

Gender *

Male

Email Address *

e-mail address

Phone Number *

(949)346-2355

Subject

Macular degeneration

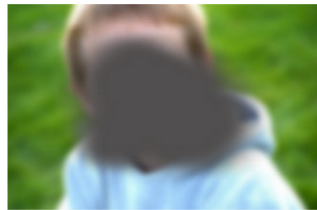
Your Message *

Submit



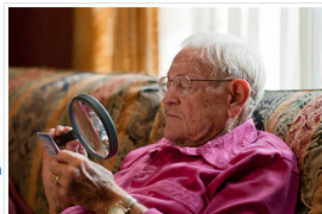
What is Macular Degeneration?

If you're here, you've probably just been diagnosed, or suspect you have Macular Degeneration, or someone you care about has just been diagnosed or suspects they have the disease. This entire site is dedicated to information regarding Macular Degeneration, but this page will give you a quick general overview to get you oriented.

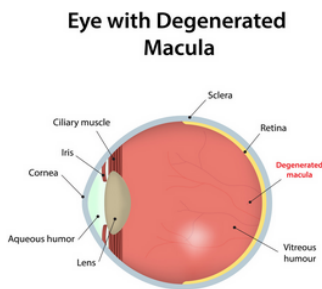


Macular Degeneration

Macular Degeneration is the leading cause of vision loss, affecting more than 10 million Americans- more than cataracts and glaucoma combined. At present, Macular Degeneration is considered an incurable eye disease.



Macular Degeneration is caused by the deterioration of the central portion of the retina, the inside back layer of the eye that records the images we see and sends them via the optic nerve from the eye to the brain. The retina's central portion, known as the macula, is responsible for focusing central vision in the eye, and it controls our ability to read, drive a car, recognize faces or colors, and see objects in fine detail.



One can compare the human eye to a camera. The macula is the central and most sensitive area of the so-called film. When it is working properly, the macula collects highly detailed images at the center of the field of vision and sends them up the optic nerve to the brain, which interprets them as sight. When the cells of the macula deteriorate, images are not received correctly. In early stages, macular degeneration does not affect vision. Later, if the disease progresses, people experience wavy or blurred vision, and, if the condition continues to worsen, central vision may be completely lost. People with very advanced macular degeneration are considered legally blind. Even so, because the rest of the retina is still working, they retain their peripheral vision, which is not as clear as central vision.

Types of Macular Degeneration

There are two basic types of Macular Degeneration: "dry" and "wet." Approximately 85% to 90% of the cases of Macular Degeneration are the "dry" (atrophic) type, while 10-15% are the "wet" (exudative) type. Stargardt disease is a form of macular degeneration found in young people, caused by a recessive gene.

By selecting the "Submit" button at the bottom of this page, you are (i) acknowledging and accepting the HIPAA Release of Information Authorization Form, (ii) acknowledging and accepting the TeleHealth Medical Group- Regenerative Medical Group and Www.Stemcell.life Privacy Statement (iii) acknowledging and accepting the Terms and Conditions.



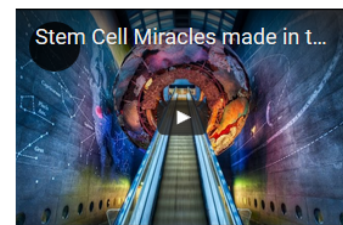
Free Download:



Stem Cell Therapy for Macular Degeneration
Fact Sheet
Regenerative

Patient Testimonials:

Meet Besse!



FAQs by Dr. Henderson



theguardian



Stages of Macular Degeneration

There are three stages of Age-related Macular Degeneration (AMD).

- Early AMD- Most people do not experience vision loss in the early stage of AMD, which is why regular eye exams are important, particularly if you have more than one risk factor (see below). Early AMD is diagnosed by the presence of medium-sized drusen (yellow deposits beneath the retina).
- Intermediate AMD- At this stage, there may be some vision loss, but there still may not be noticeable symptoms. A comprehensive eye exam with specific tests will look for larger drusen and/or pigment changes in the retina.
- Late AMD- At this stage, vision loss has become noticeable.

Causes of AMD

The specific factors that cause macular degeneration are not conclusively known, and research into this little understood disease is limited by insufficient funding.

At this point, what is known about age-related Macular Degeneration is that the causes are complex, but include both heredity and environment.

Scientists are working to understand what causes the cells of the macula to deteriorate, seeking a macular degeneration treatment breakthrough.

They know the causes are not the same for Age-related Macular Degeneration as they are for Stargardt disease. Stargardt disease has a specific genetic cause in most cases, whereas AMD involves both genetic and environmental factors. Dr. Carl Kupfer, the former Director of the National Eye Institute, National Institutes of Health, has stated that Macular Degeneration will soon take on aspects of an epidemic as the Baby Boomers' age: "As the "baby boom" generation ages, and in the absence of further prevention and treatment advances, the prevalence of AMD is estimated to reach epidemic proportions of 6.3 million Americans by the year 2030." AMDF supports research on age-related macular degeneration symptoms, causes, and treatment.

Risk Factors

The biggest risk factor for Macular Degeneration is age. Your risk increases as you age, and the disease is most likely to occur in those 55 and older. Other risk factors include:

- Genetics- People with a family history of AMD are at a higher risk.
- Race- Caucasians are more likely to develop the disease than African-Americans or Hispanics/Latinos.
- Smoking- Smoking doubles the risk of AMD.



What are some of the Macular Degeneration complications that can be improved through stem cell therapy?

Patients who receive stem cell therapy through RMG have not required additional eye injections and report improvements in multiple aspects of the disease.

After amniotic stem cells, most of patients experience:

- Decreased need for brighter light when doing close work or reading
- Less blurriness of printed words
- Less difficulty recognizing faces
- Corrected crooked central vision
- Decreased blurred dark or white spot in the center of the field of vision
- Improved haziness of your central or overall vision
- Decreased difficulty adapting to low levels of light, such as when entering a dimly lit

restaurant

- Minimized hallucinations of people or geometric shapes (experienced in advanced cases)

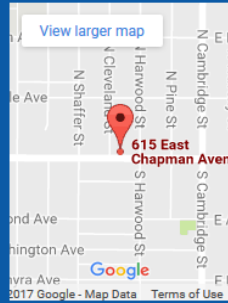
(949) 346-2355

info@stemcell.life

Regenerative Medical Group

Orange- Old Town

615 E. Chapman Ave.
Orange, CA 92866



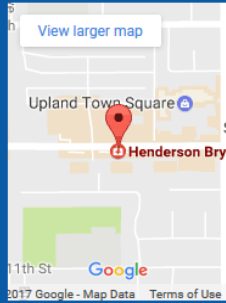
Orange- Hemisphere

5334 E. Chapman Ave.
Suite 100
Orange, CA 92869



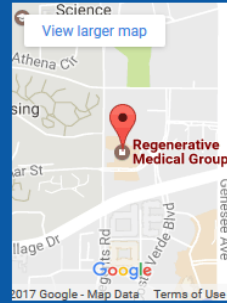
Upland

954 W. Foothill Blvd.
Suite B
Upland, CA 91786



La Jolla

4150 Regents Park Row
Suite 235
La Jolla, CA 92037



Florida

1400 Goldtree Dr,
Suite 105
Port St Lucie, FL 34952



[Stem Cell Therapy](#) • [PRP Therapy](#) • [Dr. Henderson](#) • [About RMG](#) • [Contact us](#)

© 2017 Stemcell.life All Rights Reserved

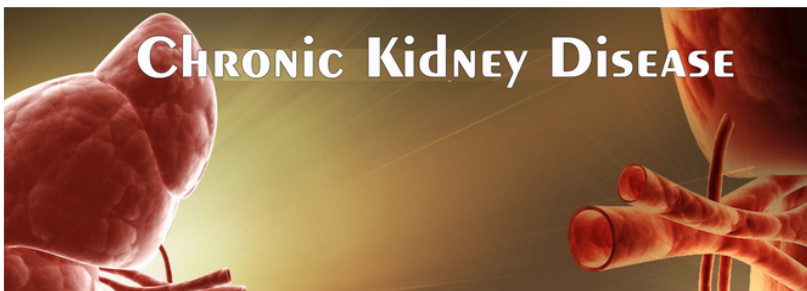
- [HIPAA Release of Information Authorization Form](#)
- [Privacy Statement](#)
- [Terms and Conditions.](#)



Leave a message



<https://www.stemcell.life/macular-degeneration.html>

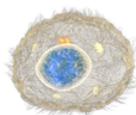


CHRONIC KIDNEY DISEASE

See If You Qualify
Patient enrollment is limited

See If You Qualify for **RMG Stem Cell Therapy**(Patient enrollment is limited)
To determine if you, or your loved one, may qualify for RMG Stem Cell Therapy, it is necessary to ask some medical questions.
Please be assured that all information you provide will only be used to determine eligibility for this treatment opportunity.
If your answers show that you or your loved one may be a candidate for this treatment, your information will be forwarded to the our physician team so they can contact you.

Can Stem Cell therapy help patients with chronic kidney disease?

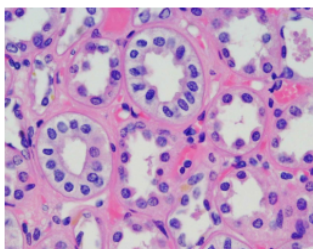


Yes it can. Stem Cells can make new cells that replace damaged cells and reverse chronic kidney disease symptoms. RMG offers patients access to chronic kidney disease Stem Cell therapy using amniotic Stem Cells. These Stem Cell treatments improve complications in patients with chronic kidney disease. These procedures help patients who don't respond to typical drug

treatments, want to reduce their reliance on medication, or are looking to try Stem Cell therapy before starting a lifelong drug treatment.

How do Stem Cells work in patients with chronic kidney disease?

Chronic kidney disease (CKD), also termed chronic renal disease, is a condition in which your kidneys are damaged and unable to filter blood as well as healthy kidneys can. As a result, wastes from the blood remain in the body and may lead to other health problems. It is estimated by the Center of Disease Control that more than 10% of adults in the United States – more than 20 million people – may have CKD. As kidney disease progressively worsens, wastes in the blood can build to high levels and make you feel very sick. Complications develop slowly over a long periods of time, and can include high blood pressure, weak bones, anemia, nerve damage, and poor nutritional health. Kidney disease also increases risk of having heart and blood vessel disease. CKD may be caused by diabetes, high blood pressure and other disorders. As CKD progresses, they are categorized as stages listed below:



Stages of Chronic Kidney Disease of all Types		
Stage	Qualitative Description	Renal Function (mL/min/1.73 m ²)
1	Kidney damage-normal GFR	≥90
2	Kidney damage-mild ↓ GFR	60-89
3	Moderate ↓ GFR	30-59
4	Severe ↓ GFR	15-29
5	End-stage renal disease	<15 (or dialysis)

*GFR – *glomerular filtration rate* – is a test to see how well the kidneys are working, by estimating how much blood passes through the glomeruli each minute. Glomeruli are tiny sacs in the kidney that filter wastes from the blood. Your GFR tells you the stage of

Our offices are in:

Orange Upland La Jolla Florida



We give YOU HELP and HOPE where YOU and others have given up

Dr. Bryn J. Henderson

[Schedule Appointment](#)

Contact us @ (949)346-2355

Full Name *

Gender *

Email Address *

Phone Number *

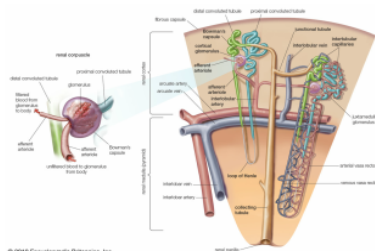
Subject
 Kidney diseases

Your Message *

Show this letter to your healthcare

Exhibit B (9)

parts in the kidney that filter waste from the blood. your GFR tells your doctor the stage of your kidney disease and helps us plan your treatment. Early detection and treatment can keep CKD from getting worse!



© 2010 Encyclopædia Britannica, Inc.

Stem Cells improve kidney function, make new blood vessels in the kidney and improve our body's immune system to optimize the defense of the kidneys from diseases. The increase in circulation from new vessels creates more filtering and better kidney function that decreases waste inside our bodies.

Stem Cells have been shown to help avoid and reduce dialysis. This allows patients to

work and continue as productive citizens. This also allows family members and friends more free time because patients regain independence.

The financial benefits of eliminating dialysis and its consequences greatly outweigh the costs of Stem Cells. The long-term expense of dialysis is replaced by a short protocol of Stem Cells, which in all likelihood will eventually be a covered benefit of some insurance plans.

Patient Testimonials:



██████████ is a lovely lady who suffered from Chronic Kidney Disease for six years. She was around stage 4 of her Chronic Kidney Disease (CKD).

Watch this short video where ██████████ will tell you her story. We're so happy for her! Bless you ██████████

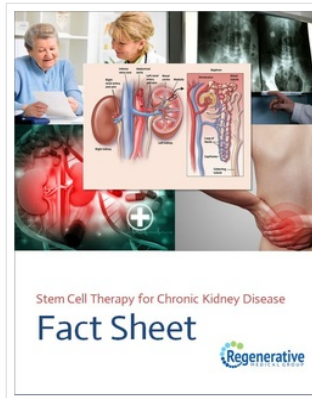
Patients who receive Stem Cell therapy through RMG report improvements in multiple aspects of depression related complications, such as:

- Fatigue
- Fluid retention, swelling of extremities
- Shortness of breath
- Urination changes
- Kidney pain felt in the low back
- Sleep problems
- Numbness or tingling in the toes or fingers
- Poor appetite
- Trouble concentrating
- Puffiness around your eyes, especially in the morning
- Muscle cramping at night
- Dry, itchy skin

provider:

A Letter to your Dr.
[Download File](#)

Free Download:



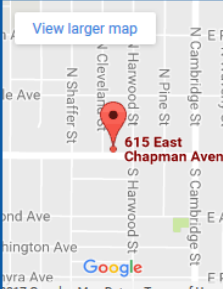
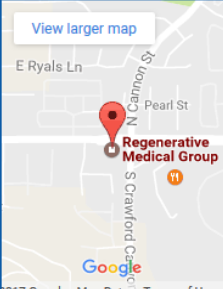
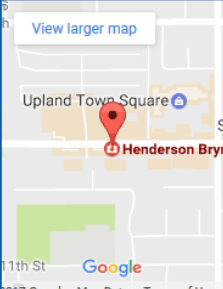
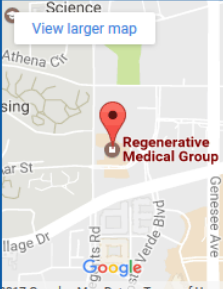

FAQs by Dr. Henderson



UP

[\(949\) 346-2355](tel:(949)346-2355) info@stemcell.life



Regenerative Medical Group

<p>Orange- Old Town</p> <p>615 E. Chapman Ave. Orange, CA 92866</p> 	<p>Orange- Hemisphere</p> <p>5334 E. Chapman Ave. Suite 100 Orange, CA 92869</p> 	<p>Upland</p> <p>954 W. Foothill Blvd. Suite B Upland, CA 91786</p> 	<p>La Jolla</p> <p>4150 Regents Park Row Suite 235 La Jolla, CA 92037</p> 	<p>Florida</p> <p>1400 Goldtree Dr, Suite 105 Port St Lucie, FL 34952</p> 
--	---	--	---	--

Stem Cell Therapy • PRP Therapy • Dr. Henderson • About RMG • Contact us

© 2017 Stemcell.life All Rights Reserved

- HIPAA Release of Information Authorization Form
- Privacy Statement
- Terms and Conditions.


[Leave a message](#)


<https://www.stemcell.life/kidney-diseases.html>