

MANDATORY
CHAMBERS COPY

EXHIBIT F



Stem Cell Therapy for Macular Degeneration

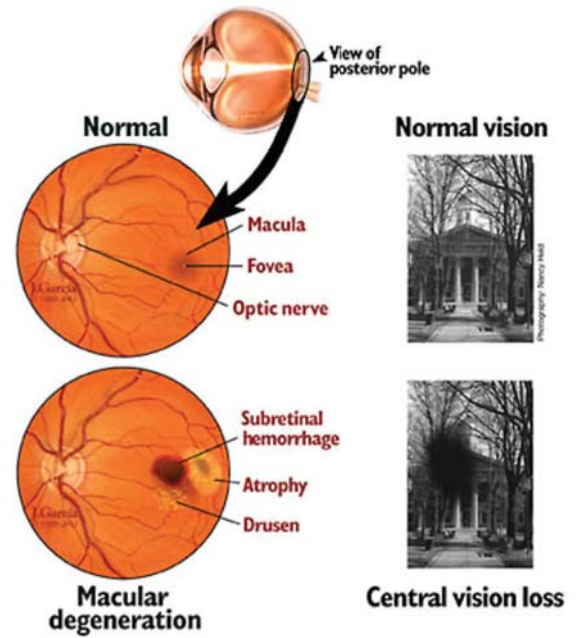
Fact Sheet

Can Stem Cell Therapy help patients who have macular degeneration?

Yes it can. It can make new cells that replace damaged cells and reverse macular degeneration symptoms.

RMG offers patients access to macular degeneration stem cell therapy using amniotic Stem Cells.

These Macular Degeneration Stem Cell Treatments have been shown to improve sight in patients with macular degeneration. These procedures help patients who don't respond to typical drug treatment. These patients often have better results if stem cell therapy is begun early in the illness.



Below are some frequently asked questions regarding stem cell therapy for macular degeneration.

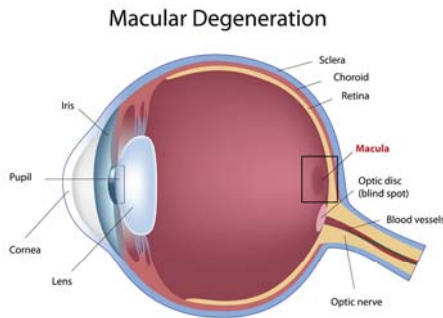
Frequently Asked Questions for Macular Degeneration Stem Cell Therapy

1. What is Macular Degeneration?

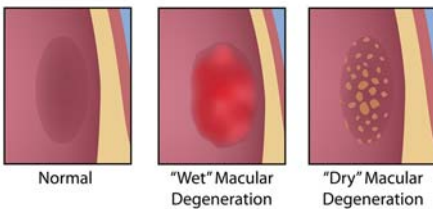
Age-related macular degeneration, *AMD*, is a common eye condition and a leading cause of vision loss among people age 50 and older. It causes damage to the macula, a small spot near the center of the retina and the part of the eye needed for sharp, central vision, which lets us see objects that are straight ahead. In some people, *AMD* advances so slowly that vision loss does not occur for a long time. In others, the disease progresses faster and may lead to a loss of vision in one or both eyes. As *AMD* progresses, a blurred area near the center of vision is a common symptom. Over time, the blurred area may grow larger or you may develop blank spots in your central vision. Objects also may not appear to be as bright as they used to be.

AMD combined with other problems can lead to complete blindness, with no ability to see. The loss of central vision in AMD can interfere with simple daily activities, such as the ability to see faces, drive, read, write, or do close work, such as cooking or fixing things around the house.

2. How do stem cells work in patients who have macular degeneration?



Macular Degeneration is damage to the *macula* and a subsequent loss of central vision. There are two types - *wet* and *dry* - both benefit from stem cells. The wet is due to abnormal blood vessel growth. The dry has yellow deposits (*drusen*) due to cholesterol.



The stem cells make NEW macular blood vessels, which clean up the deposits (in dry) or increase circulation making normal blood vessels (in wet).

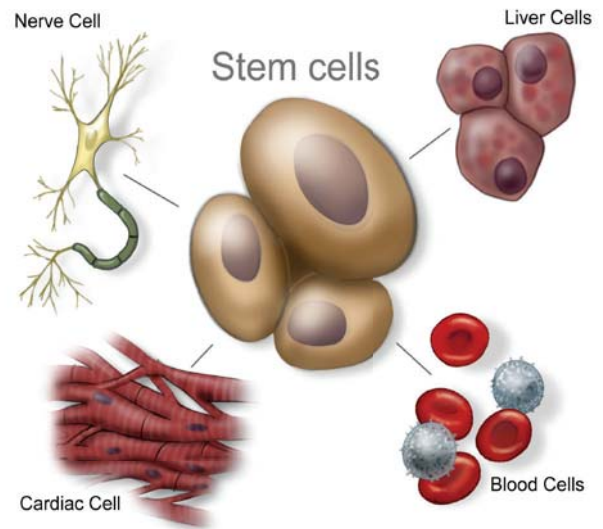
Patients who receive stem cell therapy through RMG have not required additional eye injections and report improvements in multiple aspects of the disease. After amniotic stem cells, patients experience:

- Decreased need for brighter light when doing close work or reading
- Less blurriness of printed words
- Less difficulty recognizing faces
- Corrected crooked central vision
- Decreased blurred dark or white spot in the center of the field of vision
- Improved haziness of your central or overall vision
- Decreased difficulty adapting to low levels of light, such as when entering a dimly lit restaurant
- Minimized hallucinations of people or geometric shapes (experienced in advanced cases)



3. What are stem cells?

Stem cells are special cells capable of renewing themselves through cell division, even after long periods of inactivity. Stem cells are formed at conception and have the ability to become different kinds of tissues in the body including muscle, nerve, organs, bone, blood and more. Their exceptional ability to become other types of cells makes them essential in repairing and renewing every kind of tissue and body organ. Unlike other types of cells in the body, *stem cells* can divide and replicate repeatedly. Stem cells are at the center of a new field of science called *regenerative medicine*.



Because stem cells can become neurons, bone, muscle, cartilage and other specialized types of cells, they have the potential to treat many diseases, including Parkinson's, Alzheimer's, Diabetes and more.

4. What is stem cell therapy and how does it work?

Since we have hundreds of patients with successful results we have been able to identify patterns of where stem cells make NEW cells. This is one of our advantages in helping you! We use the most optimal stem cells for each patient. Usually we strive for pluri-potential cells because these stem cells can differentiate into whatever your body needs. We strive to create the most powerful stem solution. Most powerful means we determine not only the number of stem cells but also the percent that are alive and the percent purity for each type of stem cell.

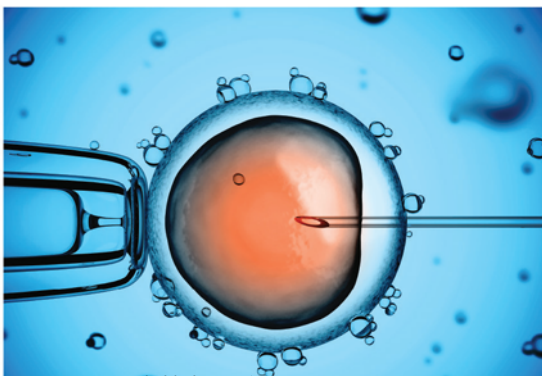
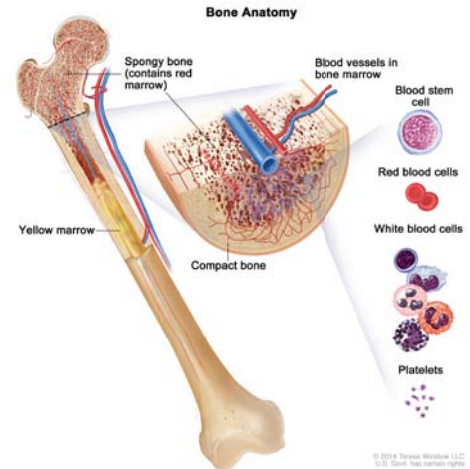


Exhibit F(4)

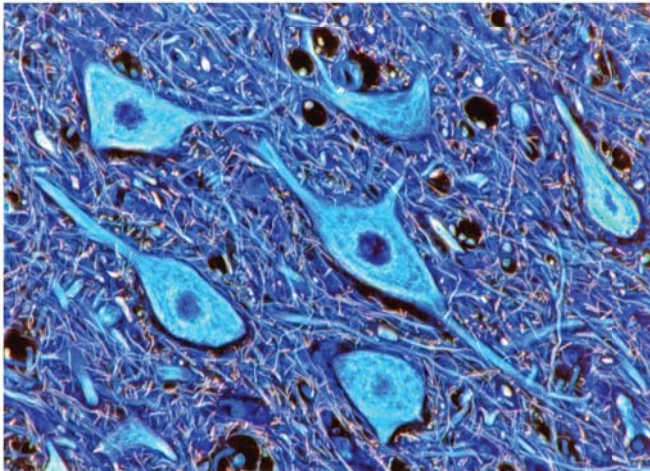
Our office currently offers 5 types of stem cells – more than any other office so that we are not limited in creating the best solution for you. Some stem cells are best for muscles, others are better for brain cells still others are better for internal organs. Therefore we have the ability to determine and use the best stem cell solution for you!

Your own Adult Stem Cells or Tissue-specific Stem Cells harvest from:

- a. Blood
- b. Adipose or fat
- c. Bone marrow
- d. Induced Pluri-potent Stem Cells from your own cells via an affiliated laboratory
- e. Amniotic stem cells from purified Placental tissue



5. What are Amniotic Stem Cells?



Amniotic Stem Cells are obtained from healthy donors who have volunteered to donate their amniotic fluid after undergoing elective Caesarian delivery. Each donor submits their past medical history and social history for review. The donated tissue is collected aseptically, tested multiple times, and then it undergoes gamma sterilization. This membrane and fluid is rich with the basic components necessary for tissue regeneration.

6. How long would it take to see improvement?

This is one of the most common and important questions a patient can ask. Keep in mind that every patient who receives any type of medical procedure will react differently to their treatment. Patients who have received stem cell therapy through RMG generally see the full culmination of their results from almost immediately to a few months later. Some patients have taken up to 6 months before seeing the full effect of the treatment.

7. How long does the stem cell treatment through RMG take?

A patient's visit for stem cell treatment lasts for only 3 days. The first day will be a new patient orientation followed by a consultation with the treating physician and

often a preparation IV. The very next morning the patients will begin their stem cell treatment which will last roughly 2 hours. They will return to the center on the third day for a post-op consultation and an additional IV before returning home.

8. Will I need to return regularly for follow-ups?

Patients will only need to visit RMG once for their treatment. Once their treatment has completed, patients will return home where the RMG staff will follow-up with them for our studies on a regular basis.

Because the visit lasts only 3 days, patients travel to RMG from all over the world to receive the highest level of stem cell therapy available.

Very rarely patients need to come back for additional treatment steps.



RMG offers a complete travel service for patients and caregivers that includes air & ground transportation, Shuttle service and Hotel services.

9. Am I a candidate for stem cell therapy through RMG?

RMG follows a strict protocol to determine whether each and every patient is a good candidate for stem cell therapy. Every patient will undergo a full medical history evaluation to determine their candidacy before being approved for treatment.

To determine if you, or your loved one, may qualify for RMG Stem Cell Therapy, it is necessary to ask some medical questions.

If your answers show that you or your loved one may be a candidate for this treatment, your information will be forwarded to our physician team so they can contact you.



Here is the link to our Macular Degeneration Questionnaire:

www.stemcell.life/amd

To learn more about becoming a patient and receiving stem cell therapy through RMG, please contact us at (888) 599-7836 or send us an Email at info@stemcell.life.

10. How much does stem cell treatment through RMG cost?

The cost of each treatment depends on each individual case. In order to learn more regarding the cost for treatment, please contact us by calling (888) 599-7836.

11. Could a stem cell therapy be repeated?

Yes, a stem cell therapy may be repeated. Current studies indicate the strong possibility of a cumulative effect from multiple stem cell therapies a patient received for their condition. Long-term studies will attempt to better understand this in detail.

12. Could a stem cell therapy be used at the same time as other therapies?

Yes it can. We often use objective measures to determine the efficacy of Stem Cell therapy.

We will evaluate your current medication and therapies to make sure, you receive the best results.

*** * ***

News and Information

- AMD Alliance International
- Association for Macular Diseases
- BrightFocus Foundation
- Foundation Fighting Blindness
- Macula Vision Research Foundation
- Macular Degeneration Associaton
- Macular Degeneration Foundation, Inc.
- Macular Degeneration Partnership
- Macular Society
- Mayo Clinic – Age-related Macular Degeneration
- National Eye Institute
- Royal National Institute for Blind People

More Information: info@stemcell.life

(949) 346-2355

www.StemCell.Life